



Alto Estate

Cortina Drive, Winter Valley
Lot 157 / 39

Facade: Zen

House: 22.05 sq Land: 505 m2

3
 2
 2
 2

Franklin 22

Inclusions

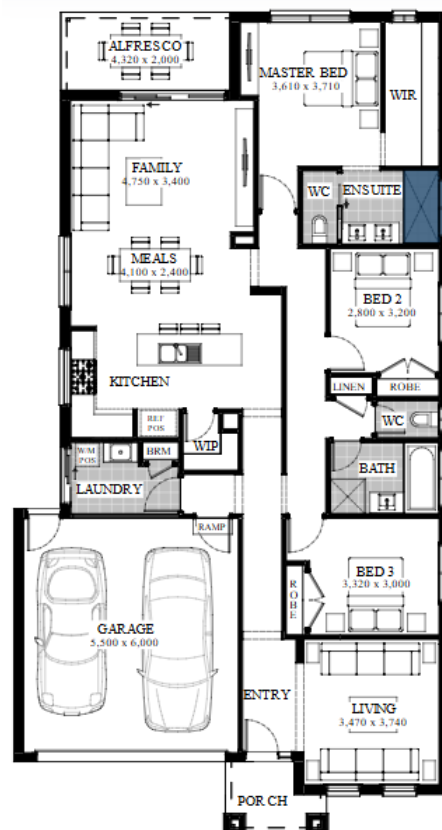
- Truecore Steel House Frame
- Colorbond Steel Roof (with Sarking)
- High Performance Double Glazed Windows & Doors
- 8 Star Energy Efficient
- 7 x 440w Panels & 3KW Inverter (single phase)
- Bushfire Compliance to BAL 12.5
- 900mm Appliances
- 50 Year Structural Guarantee
- 900mm Rangehood & Upright Cooker
- Overhead Cupboards to Kitchen
- Site Costs Allowance Included
- Developer Guidelines Included
- 2550mm Ceiling Height (single storey only)
- 20mm Caesarstone to Kitchen & Bathrooms
- Flooring throughout (Laminate & Carpet)
- Shower Niche x 2
- Floor to Ceiling Tiles (Ensuite & Bathroom)
- Freestanding Bath
- All Electric Pack
- \$10K First Home Owners Grant Regional Inc.

Contact:

Joel Hofstra

0460 305 225

joelhofstra@jgkinghomes.com.au



*Conditions apply, speak to your New Home Advisor for future details. Not all house and land packages are created as standard or on blocks that are optimally orientated and therefore JG King Homes cannot guarantee that it will achieve an 8 star NatHERS performance rating. Please talk with your new home advisor to see whether this package is classified as standard and optimally orientated in order to achieve an 8-star rating at no additional cost.