

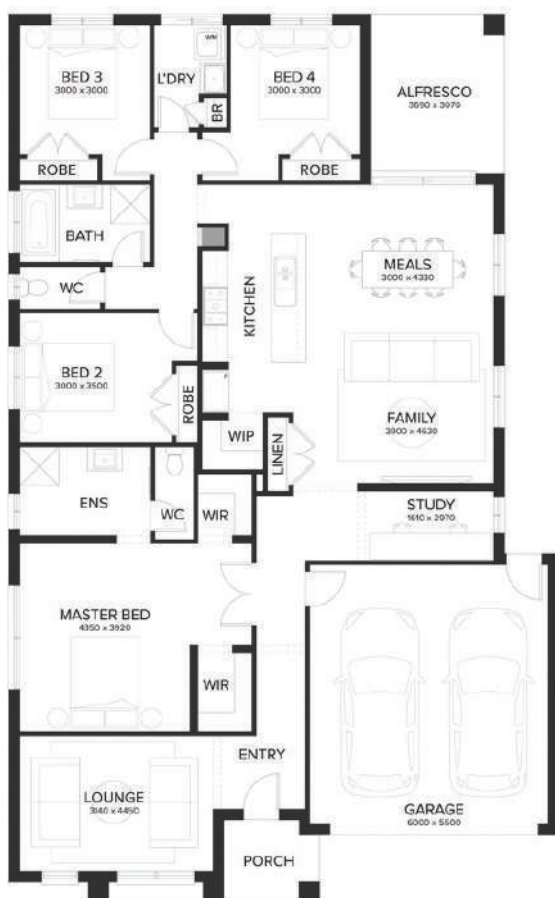
LAND
REBATE
AVAILABLE^{*}

SUITS 14.0M+ BLOCK

HOUSE & LAND PACKAGE

\$586,188*

Lot 109 Alto , WINTER VALLEY

4  2  2  2 **NEWBURY 25**

ALTO

LOT SIZE 434 sqm

HOUSE AREA 234.62 sqm

Inclusions

- Bushfire Measures To Meet BAL 12.5
- Colorbond Roof
- Site Costs Including Rock Removal
- Council & Developer Requirements
- Floor Coverings Throughout
- Brick Infills Above Windows and Doors
- 2590mm Ceilings To Single Storey & Ground Floor In Double Storey Homes
- 40mm Stone Benchtops To Kitchen & 20mm To Bathroom & Ensuite
- 900mm Appliances, Dishwasher & Microwave With Trim Kit
- LED Lights Throughout
- Blinds Throughout
- Evaporative Cooling

**For more information contact
Daniel New on 0482 052 817**

*Pricing Is Based On Developer Engineering Plans, Estate Guidelines And Plan Of Subdivision. Land Availability And Pricing Supplied By The Developer Are Subject To Change Without Notice. All House And Land Packages Are Subject To Developer Approval. Price Does Not Include Any Stamp Duty, Government, Legal Or Bank Charges. *Total Package Price Minus \$10K FHOG (Subject To SRO Eligibility) The First Home Owners Grant Is A Government Incentive And Any Claims Will Be Lodged Externally. Photographs In This Flyer May Depict Fixtures, Finishes And Features Either Not Supplied Or Are Upgrade Options By Sherridon. All Floorplan, Facade Images And Photographs Have Been Used For Illustrative Purposes Only (Refer To Contract Documentation For Full Details) And May Not Represent The Final Product As Shown. Please Refer To Your Friendly New Home Consultant For An Exact List Of Inclusions With Detail. Sherridon Homes Reserves The Right To Amend Specification And Price Without Notice. VIC Builder's Licence: CDB-U 50039v. Advertised Pricing Includes a \$30,000 Developer Rebate. This Is Subject To The Developers Approval, Terms and Conditions Apply

Call **1300 188 668** or visit **sherridonhomes.com.au**

Sherridon Pty Ltd | 56 Barclay Road, Derrimut, Victoria 3026 | P +61 3 8390 5000 | E info@sherridonhomes.com.au | Registered Building Practitioner CDB-U50039